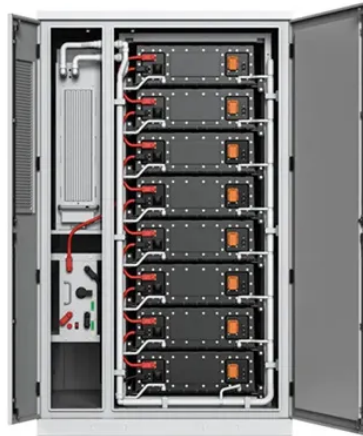


# Lithium-acid battery and lead-acid battery connected in parallel



## Overview

Energy density refers to the amount of energy stored for a given weight and volume of a battery. Lithium-ion batteries have a higher energy density as compared to a similar-sized lead-acid battery. Lead-acid batteries are heavier and have lower charge storage capacity compared to lightweight lithium-ion batteries. For this, a battery cycle refers to the number of times a battery can be charged and discharged before the battery charge capacity is diminished. Lithium-ion batteries have a cycle rate. The type of battery to be used depends on the application needed, lead-acid batteries are more cost-effective and are readily available. On the other, the lead-acid battery chemistry is complicated and will take a longer period to charge the battery. To charge a lead-acid battery it may take anywhere between 8 to 10 hours whereas it. Depth of discharge refers to the extent to which a battery can be discharged without damaging it. The depth of discharge is usually a percentage of the.



## Article Content

Floating multiple sealed lead acid batteries in parallel

In theory it is OK to connect them in parallel with two conditions: Each battery must be in a state where it can be voltage charged. This is fine for lead acid batteries unless they are very run down. Very discharged lead-acid batteries have to be charged with fixed current until they get to a minimum voltage, then they can be voltage charged.

Can lead-acid batteries and lithium batteries be connected in ...

A single lithium battery is 3.7V, a single lead-acid battery is  $2 \times 2 = 4V$ , (a lead-acid cell is 2V, a battery can be made of 2-6 cells, or even 8 cells, that is, 4-16V),, If they are combined ...

How to Connect Two Batteries to One Solar Panel: A Step-by ...

Here are the most common battery types you can consider: Lead-Acid Batteries. Lead-acid batteries are one of the oldest battery technologies. They come in two main types: flooded and sealed (AGM or gel). Flooded Lead-Acid: These batteries require regular maintenance, including water refilling. They're cost-effective but can be bulky.

Parallel Battery Installation Guide

Remove Lead Acid Batteries and install Allied Lithium Batteries. Parallel Batteries make common connections only. Positive (red) only connects to positive, likewise Negative (black) only connects to negative. Parallel Batteries must match cart controller voltage (36V/48V/72V), do not connect parallel batteries in series to protect from high ...

3. Battery bank wiring

Examples of large battery banks containing 2V lead acid batteries or lithium batteries: 2V lead acid batteries: 2V OPzV or OPzS batteries are available in a variety of large capacities. You only have to pick the capacity you want and connect them in series. They are supplied with dedicated connection links exactly for that purpose.

Wiring Batteries in Parallel Danger: A Comprehensive Safety Guide

The pressure remains the same, but you now have double the water. Same as the water tanks, let's consider you have lithium batteries, each with 12 volts and 100 amp hours. Connect two lithium batteries with 12 volts in parallel, and the total voltage is still 12 volts, but the total capacity jumps to 200 amp hours.

Can lithium batteries and lead acid batteries be used together?

NEVER connect batteries with different chemistries together. For example, the charging requirements of Lead Acid batteries and Lithium batteries are very different . If you do ...

Can I Use Lithium and Lead-acid Battery Together?

The Old Faithful: Lead-Acid Batteries. Lead-Acid batteries are like the old, sturdy friend that you can depend on. They've been around a long time and work in places from cars to boats. They are pretty affordable too. But, they are heavy and take a bit more space than other types of batteries. The New Kid on the Block: Lithium Batteries

Lithium Ion and Lead Acid battery in series

Is it possible/safe/feasible to connect my 12v lead-acid battery in series with a 3.7v Lithium-Ion bundle (of reasonably similar C) for a 15.7 (nominal) volt setup? I have already done some hand-wavy calculations and think I will hit my amp limit (though I should probably stay around 45 to be safe) at ~14.5v, so I will use a PWM (which I ...

LiFePO4 vs Lead Acid | Can You Use Lead Acid and LiFePO4 ...

Lead acid batteries are recycled at a much higher rate and contain toxic materials like lead and sulfuric acid. Best Use Cases for Each Style. Ultimately, choosing between a LiFePO4 battery vs lead acid can be done based on application. Technically, anything a lead acid battery can do, a LiFePO4 battery can do better.

Battery Bank Parallel Extreme: LiFePo4, Li-ion, Lead Acid

In part 2 of our battery bank parallel test, we are going to fully charge the two batteries and see what happens if one charges faster than the other. We the...

Lithium in parallel with Lead Acid

Some are known to intentionally parallel a lead acid battery to a lithium starting battery as insurance in case the BMS were to disconnect the lithium from the motor's alternator. This is not a problem as that is a benefit to both batteries, float charge for the AGM and pulls the lithium down just little from a 100% charge which is desirable.

comparison on study of lithium ion parallel and lead acid parallel ...

Lead acid battery may be used in parallel with one or more batteries of equal voltage. When connecting batteries in parallel, the current from the charger will tend to divide almost equally ...

AGM and Lithium in Parallel

If a lead acid AGM battery can be charged with a constant voltage charger without harm, and a lithium battery can be charged with a constant voltage charger without harm, then how is having both battery types in parallel being charged any different? In fact, a Yandina Combiner or similar paralleling device does just that.

Wiring Batteries in Parallel Danger – What You Need to Know for ...

For example, two 12V 100Ah batteries connected in parallel will produce a 12V 200Ah system. The voltage remains 12V since that is the rating of each individual battery. But the capacities add together for a total of 200Ah. ... Lead-acid and lithium batteries in particular should never be paralleled together. The different chemistries have ...

Mixing lead acid and lithium

Interesting and extreme coincidence - I have just taken the leap, 3 days ago, to connect my new 180Ah (2x 90Ah) new LiFePO4 batteries in parallel with my existing OpZS 600Ah battery. I ...

Can we connect lead acid and lifepo4 batteries in parallel

Nominal Voltage Discrepancy: Lead acid batteries typically have a nominal voltage of about 2.1 volts per cell (12.6 volts for a 6-cell battery when fully charged), whereas LiFePO4 batteries usually have a nominal voltage of 3.2 volts per cell (about 12.8 volts for a 4-cell configuration). This slight difference can create imbalance during charging and discharging.

Can Lead Acid & Lithium Battery Banks be Paralleled ...

While Lead-acid batteries have a fairly sharp discharge voltage drop while it is being discharged. So it would seem to me that the two batteries ...

Design and control of the hybrid lithium-ion/lead-acid battery

In authors proposed plug-in module, consisting of lithium-ion battery and supercapacitor, that is connected to the lead-acid battery energy storage via bidirectional DC/DC converters. The aim of the module is to reduce current stress of lead-acid battery, and as a result to enhance its lifetime.

Can lithium and lead-acid batteries be used in parallel?

Lithium iron batteries and lead-acid batteries can not be connected in series or parallel. In series. 1□Discharge: when discharging batteries with different capacities, one will ...

Can I mix lithium battery with lead acid?

Just get a gel-cell or AGM battery, put it in the trunk, hook it up in parallel with your main battery (the one in the engine bay) and be sure to route the hydrogen vent tube ...

Series and Parallel Sealed Lead Acid Battery Connections

One method of charging batteries connected in parallel, is to connect the positive output of the charger to the positive terminal of the first battery. Connect that positive terminal to the positive terminal of the second battery. Continue until all batteries are connected. Now do the same with the negative output of the charger, and the ...

Can you run Lithium and Lead Acid batteries together? Let's

I'm was tired of getting conflicting answers on if you could run lithium (specifically LifePo4) batteries and lead acid together without an isolator - so I w...

Can Lead Acid Batteries Parallel with Lithium Batteries?

No, you cannot connect lead acid and lithium batteries in parallel because they have different characteristics. To balance their voltage, you need a DC/DC. Skip to content. Menu. Menu. ... Connecting lead acid and lithium batteries in parallel is generally not recommended due to differences in their charging and discharging characteristics.

Battery Isolator with Lithium and Lead Acid Connections

When to Connect Your Battle Born Batteries and Lead Acid Batteries. When you are looking to interconnect your lithium-ion batteries with your lead acid batteries, the only method we recommend is with a battery isolator or DC to DC charger in line between the two. The most common application of this set up is for alternator charging.

Can lead-acid batteries be used in parallel with lithium batteries ...

Lithium batteries can not be connected in parallel with lead-acid batteries for the following reasons. (1) discharge: UPS batteries with different capacities, when discharged, ...

Can I mix lithium battery with lead acid?

Also; as the main engine starting battery is connected to the alternator, if the lead-acid battery's voltage is above the voltage of the lithium pack, the lead-acid battery going to try to charge the lithium cells - resulting in much more current flowing to the lithium pack than the alternator could put out by itself; and (again, depending on ...

Can Lead Acid Batteries Parallel with Lithium Batteries? Benefits ...

Lithium batteries and lead-acid batteries cannot be connected in parallel without a battery management system. Their different charging and discharging characteristics ...

Connecting batteries in parallel - BatteryGuy ...

There are two ways to wire batteries together, parallel and series. The illustration below show how these wiring variations can produce different voltage and amp hour outputs. In the graphics we've used sealed lead acid ...

Can Lead Acid Batteries Parallel with Lithium Batteries?

No, you cannot connect lead acid and lithium batteries in parallel because they have different characteristics. To balance their voltage, you need a DC/DC converter. While ...

Connecting LiFePo4 and Lead Acid batteries in parallel? : r/solar

I've been looking into lithium "upgrades" for it and have found 12v LiFePo4 batteries that would work great in it! These LiFePo4 batteries have a built in BMS and such. My question is, I have two 12v 100Ah deep cycle lead acid batteries already chained up to the generator in parallel to give me a longer run time.

Can lithium batteries and lead acid batteries be used together?

\$begingroup\$ Your question is unclear, you probably mean not only using them together (different batteries used separately in the same device, that's OK) but you also want to connect them together (in parallel or series). That last one is a big NO.NEVER connect batteries with different chemistries together. For example, the charging requirements of Lead ...

Which is Better: Lead Acid or Lithium Ion Battery? A ...

Lithium battery charging curve: Lithium batteries usually use the constant current-constant voltage charging method, but their charging process is different from that of lead-acid batteries, especially lithium batteries have stricter protection against ...

Lithium Parallel In Harmony With Lead Acid

The results from our tests indicate that it doesn't make a difference if there is a lead acid battery either wired in parallel or connected as an engine starting battery. This shows that you don't necessarily need to wait for your lead acid to fail before replacing it with lithium or worry about the fact your engine starting battery is lead ...

Can You Swap Lead Acid Battery with Lithium Ion

Switching from lead-acid to lithium-ion batteries brings big advantages. But, knowing the main differences is key. Lithium-ion batteries pack more energy, last longer, and charge differently than lead-acid ones. What Makes Lithium Different from Lead Acid. Lithium-ion batteries can last 5 to 10 years, which is about double lead-acid batteries.

Can lithium batteries and lead acid batteries be used together?

Batteries with completely different performances should not be used in parallel. Even if diodes are added, self-discharge between the batteries can be prevented, but a good parallel discharge effect is not obtained. ... Which is better for lead-acid batteries and lithium batteries? 1.Lithium battery is light in weight and large in specific ...

Is it acceptable to connect a car battery and an AGM battery in parallel?

AGM and Lead Acid batteries are technically the same when it comes to their base chemistry, as long as both batteries have the same voltage at resting they can be connected in parallel, when your engine is running it charges both of the batteries to ~14.6V and after you turn off your car it goes down to resting state, if one of your battery has ...

comparison on study of lithium ion parallel and lead ...

Lead acid battery may be used in parallel with one or more batteries of equal voltage. When connecting batteries in parallel, the current from the charger will tend to divide almost equally ...

### Connecting Batteries in Parallel to Extend Runtime

Batteries connected in parallel must have the same voltage. For instance, if you are setting up a 12V system, all your batteries must also be 12V. Mixing different voltage batteries can cause damage or lead to inefficient charging. ... It's not advisable to use lithium and lead-acid batteries together in a parallel configuration. They have ...

### Adding a new lead acid battery in parallel to an old one?

Note, when you parallel batteries, you should have a fuse/breaker per string to prevent a short on one battery string from being feed by the other string--this does add wiring/costs to parallel battery system--and one of the many reasons why I/we really recommend going to a single string of larger AH batteries rather than paralleling--others ...

### Can I mix lithium battery with lead acid?

Also; as the main engine starting battery is connected to the alternator, if the lead-acid battery's voltage is above the voltage of the lithium pack, the lead-acid battery going to try to charge the lithium cells - resulting in ...

### Connecting lead-acid battery in parallel with lead-calcium battery

So I have a 12 V solar system (panels produce 20 V but batteries are 12 V. I also have a set of 5 batteries. One of these batteries is a marine deep cycle battery and the other is a group of five lead calcium batteries.. I read a lot about how PbCa batteries are Lead-Acid, so is it okay to connect these two dissimilar batteries in parallel to maximize usage?

### How to Connect Solar Batteries in Parallel for Maximum Energy ...

Unlock the full potential of your solar energy system by learning how to connect solar batteries in parallel. This comprehensive guide explores the benefits of increased capacity and redundancy, ensuring a reliable power supply even during cloudy days. Discover the different types of batteries, essential preparation steps, and a detailed, easy-to-follow tutorial. Plus, find ...

### What are the issues with mixing LiFeP04 batteries of different ...

If you have the batteries connected in parallel, they would be at the same voltage. Because they would have different. BMS, one would cut off before the other but that should be fine. The other would then continue charging (at a higher current) until it also cuts out. I built a 160Ah battery out of four LIFEP04 cells.

### paralleling 3 lead acid batteries

I have three 12V deep cycle/marine 24 size batteries; they have never been used in parallel. All have been recently charged and allowed 48 hours (or more) for the surface charge to dissipate. With no load, A is at 12.87V, B is at 12.95V, and C is at 12.53V. I ordered and received the necessary...

## Contact Us

For more information, pricing, or custom solutions, please contact us:

Website: <https://creperielamauvaisegraine.fr>

Email: [sales@creperielamauvaisegraine.fr](mailto:sales@creperielamauvaisegraine.fr)

Phone: +33 6 48 37 91 02

Address: 12 Rue de la Paix, 75002 Paris, France

This document is for informational purposes only. Specifications subject to change without notice.

